

Li-Sc (Lithium-Scandium)

H. Okamoto

The Li-Sc phase diagram was unknown in [Massalski2]. Figure 1 shows the Li-Sc phase diagram constructed based on a schematic phase diagram for Li-rare earth systems and a table of invariant reaction temperatures and compositions given in [1998Gan].

Table 1 shows Li-Sc crystal structure data.

Reference

1998Gan: N.N. Ganiev, Kh.M. Nazarov, and M.D. Badalov, Interaction of Lithium with Rare-earth Metals, *Izv. Ross. Akad. Nauk, Metall.*, 1998, (6), p 109-112, in Russian; TR: *Russ. Metall.*, 1998, (6), p 132-136

Table 1 Li-Sc crystal structure data

| Phase | Composition, at.% Tb | Pearson symbol | Space group | Strukturbericht designation | Prototype |
|-------|----------------------|----------------|--------------------------------|-----------------------------|-----------|
| (βLi) | 0 | <i>cI2</i> | <i>Im$\bar{3}m$</i> | <i>A2</i> | W |
| (βSc) | 100 | <i>cI2</i> | <i>Im$\bar{3}m$</i> | <i>A2</i> | W |
| (αSc) | 100 | <i>hP2</i> | <i>P6$_3$/mmc</i> | <i>A3</i> | Mg |

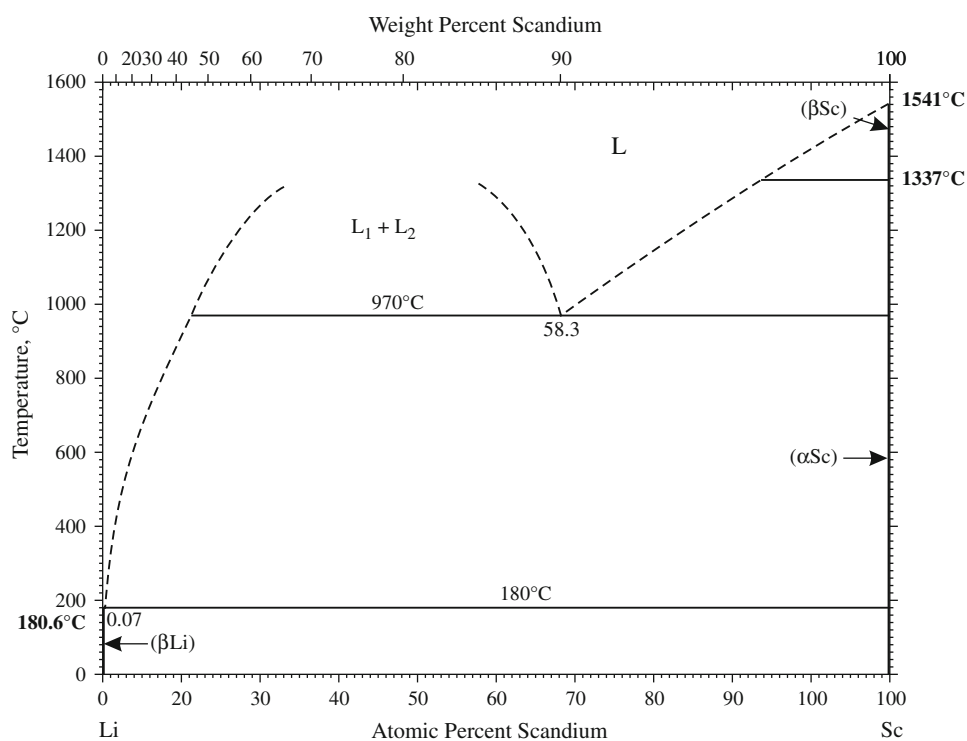


Fig. 1 Li-Sc phase diagram